

# GENERAL CONTRACTORS ASSOCIATION **Construction Update**



August 22, 2017  
Mark Yonamine, Deputy Director

Department of Design and Construction  
City and County of Honolulu



## Purpose

To inform the General Contractors Association  
about the City's Capital Improvements Program

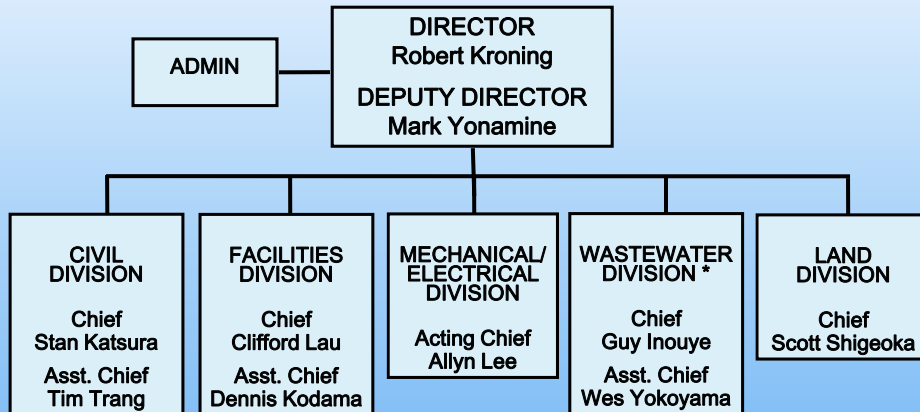


# Mayor's Priorities

- Restore needed bus routes
- Build rail better
- **Wastewater upgrades**
- **Road paving**
- **Park improvements**
- Homelessness solutions

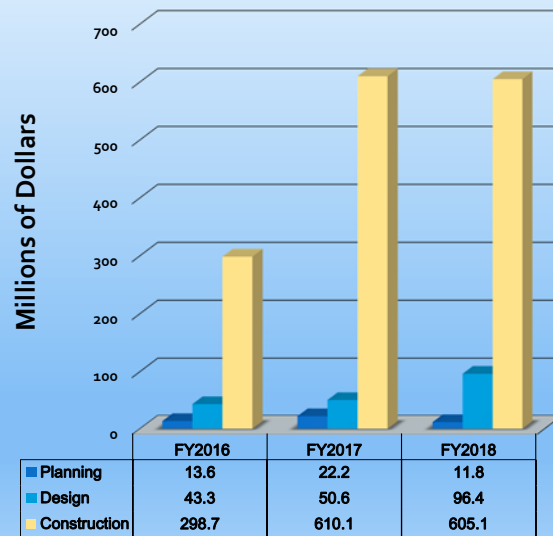


# DDC Organization

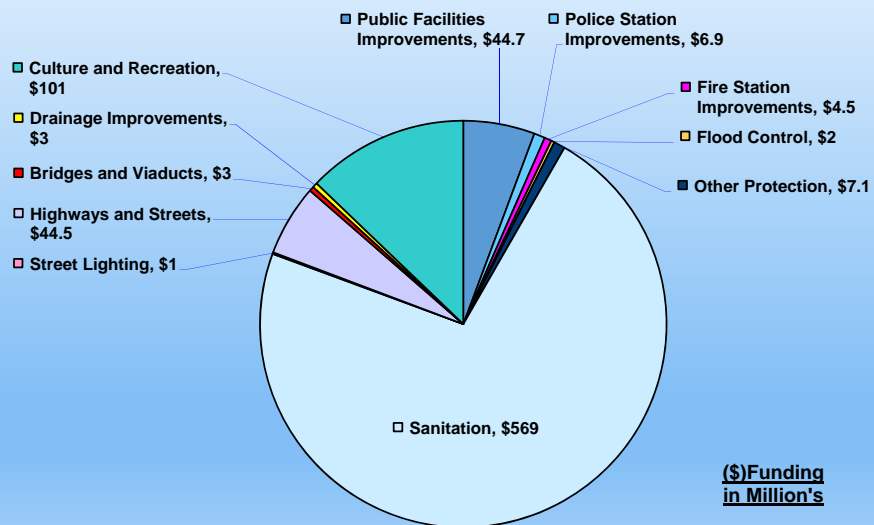


*Mission Statement: To provide engineering expertise and advice to the City's program planning and perform project planning, design, construction, inspection, and land acquisition for public facilities of the City and County of Honolulu.*

# DDC's CIP By Fiscal Years



# DDC's FY 2018 CIP Projects





**Facilities Division FY 2018  
Upcoming Construction Projects**  
(List subject to change)

- 51 Merchant Building - Spall Improvements
- Ala Moana Regional Park - Road, Parking Lots, Ewa Bathhouse, McCoy Pavilion, & Trellis
- Botanical Gardens & Urban Forestry Parking Lot Improvements
- Central Fire Station Historic Door improvements
- Design Build Play Apparatus (Hahaione Neighborhood Park, Kalakaua District Park, Puu O Hulu Community Park)
- Division of Urban Forestry (DUF) Admin & Arboriculture Relocation
- Enchanted Lakes Community Park Recreation Building Miscellaneous Repairs
- HFD Museum Bird Control & Security Improvements
- Honolulu Hale Exterior Spall Repair/Painting & Window Replacement
- Honolulu Zoo Improvements
- Hoomaluhia Botanical Gardens - Reconstruct Sewer Lines
- HPD Headquarters - Correct Building Leaks
- Kaimuki Municipal Parking Lot Improvements
- Kapolei Fire Station Personnel Quarters Improvements
- Kapolei Regional Park Skate Park & Lighting Improvements

**Facilities Division FY 2018  
Upcoming Construction Projects**  
(List subject to change)

- Koko Head Shooting Complex, Phase 2 (DPR Storage Shed Improvements)
- Kualoa Regional Park Maintenance Facility improvements
- Kuilei Cliffs & Beach Road Erosion/Rockfall Mitigative Improvements
- Makakilo Neighborhood Park Fencing
- Makiki Round Top Radio Communications Facility Improvements
- Medical Examiners Roof & Fence/Gate Improvements
- NPDES Improvements - Kaneohe & Kahuku Police Stations, Kaneohe & Kailua Fire Stations, & Ted Makalena Golf Course
- Ocean Safety Lifeguard Towers Replacement
- Patsy T. Mink Central Oahu Regional Park - Dog Obedience/Training Facility & Parking Lot Expansion
- Police Training Academy - Miscellaneous Pavement Improvements, Phase II
- Pupukea Beach Park Three Tables - Comfort Station Improvements
- Rock Fall & Erosion Mitigation Measures - Salt Lake District Park & Ala Puumalu Community Park
- Roof & Structural Improvements - Kalama Beach Park Comfort Station

**Facilities Division FY 2018  
Upcoming Construction Projects**  
(List subject to change)

- Roof Improvements - Crestview Community Park Recreation Center, Heeia Neighborhood Park Comfort Station, Kapolei Hale, Lanakila District Park Staff Office, & Manoa Valley District Park Gym (New)/Multi-Purpose Building
- Royal Hawaiian Band Facility Improvements
- Ted Makalena Golf Course - New Cart Paths, Phase V
- Thomas Square Park Improvements, Phase III
- Wahiawa Botanical Garden - Maintenance Building Renovation & Pedestrian Bridge Restoration
- Waikiki Shell Various Improvements
- Waipahu District Park Reroof Multipurpose Buildings 1 & 2
- Waipio Peninsula Soccer Park Stadium Bleacher & Various Repairs
- Walter Murray Gibson Building Improvements

# Aiea Ballfield Improvements

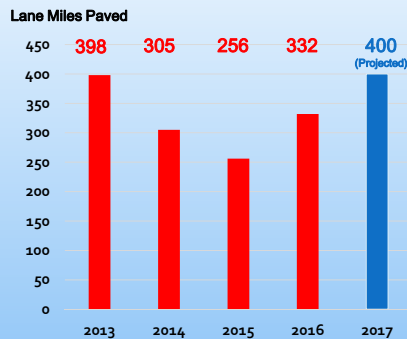


## Civil Division FY 2018 Upcoming Construction Projects

(List subject to change)

- Anapalau Street Channel Erosion Control Improvements
- Curb Ramps @ Various Locations
- Drainage Improvements – Anuenue St, Auyong Homestead Rd, Kawailoa Rd, Kionaole Rd, & Miller St
- Drainage Outfall Improvements - Aweoweo St & Portlock Rd
- Drainline Repair - 2695 Pacific Heights Rd
- Guardrail Improvements @ Various Locations
- Guardrail Replacement - Waipahu Street Bridge No. 2
- Kapiolani Blvd Double Box Culvert (#273) Bridge Rehabilitation
- Koko Drive Improvements
- North Kukui Street & Nuuanu Stream Area Improvements
- Rehabilitation of Streets @ Various Locations

## Rehabilitation of Streets



- **Requirements v Priorities v Resources**
- **Survey and Pavement Condition Management:**
  - Right-of-Way imaging every two years (earthmine)
  - MicroPaver management system
  - Seal coats
- **Paving Challenges - Solutions:**
  - Shallow utilities – Consultant exploration
  - Poor subgrade – Reconstruction
  - New regulations (NPDES) – Training & Oversight
  - Conflict Management – Lokahi



## Mechanical/Electrical Design Division FY 2018 Upcoming Construction Projects

(List subject to change)

- 51 Merchant Building Improvements - Fire Alarm Replacement
- AC System Improvements - Ala Wai Golf Course Clubhouse, Phase 2 & Waipahu Maintenance Facility & Fire Training Center
- Aiea District Park Field Lighting Improvements
- Fasi Municipal Building Fuel Storage Tank Replacement
- Fuel Storage Improvements at Various Fire Stations
- Kahuku Police Station Fire Alarm System Improvements
- Medical Examiner's Office Refrigeration
- Pearl City Police Station Underground Storage Tank Conversion
- Photovoltaic Improvements at Various Corporation Yards
- Replacement of Fire Alarm Systems @ Various Parks, Phase IV
- Replacement of Street Light Meter Cabinets & Transformers, Phase IV
- Salt Lake District Park Swimming Pool Heating System Replacement
- Upgrade HPD Security Camera Systems at Kahuku, Waikiki Substation, East Honolulu Substation, & Waipahu Training Academy
- Waikiki Shell Upgrade Light Poles



## Ala Moana Magic Island Comfort Station A

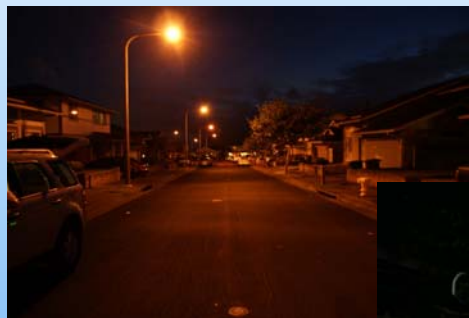


Before 2/14/2016



After Improvements

## LED Street Lighting Conversion Project



Before



After



**Wastewater Division FY 2018  
Upcoming Construction Projects**  
(List subject to change)

- Ala Moana WWPS Upgrade
- Awa Street WWPS FM & Sewer System Improvements - Waiakamilo Road Trunk Sewer
- Dowsett Highlands Relief Sewer, Pali Highway (Wyllie Street to Nuuanu Pali Drive)
- Ewa Beach WWPS Force Main Improvements, Phase I
- Honouliuli WWTP Secondary Treatment
- Honouliuli WWTP Upgrade, Phase II
- Kailua WWTP Tunnel Influent Pump Station & Headworks Facility
- Kamehameha Hwy WWPS Force Main Improvements
- Kamehameha Hwy WWPS Upgrade
- Kaneohe/Kailua Sewer Tunnel
- Kunia WWPS Force Main Improvements
- Palolo Sewer Rehabilitation
- Pearl City WWPS, Force Main, & Sewer System Alternatives
- Sand Island WWTP Return Flow Treatment

## Wastewater Division FY 2018 Upcoming Construction Projects

(List subject to change)

- Sewer I/I Relief & Rehabilitation Projects - Ala Moana Tributary Basin, Hart St Tributary Basin, & Windward Area
- Sewer Mainline & Lateral Projects
- Uwalu WWPS Upgrade
- Waianae WWTP Improvements/Upgrade, Phase I
- Wastewater Pump Station Electrical & SCADA
- Wastewater Treatment Plant, Pump Station, & Force Main Projects
- West Beach No. 1 & No. 2 WWPS & Force Main Systems Improvements
- Waipio WWPS Upgrade
- Windward Wastewater Facilities – Ground & Foundation Improvement

### Honouliuli Wastewater Treatment Plant



### Sand Island Wastewater Treatment Plant Secondary Treatment Ph 2



